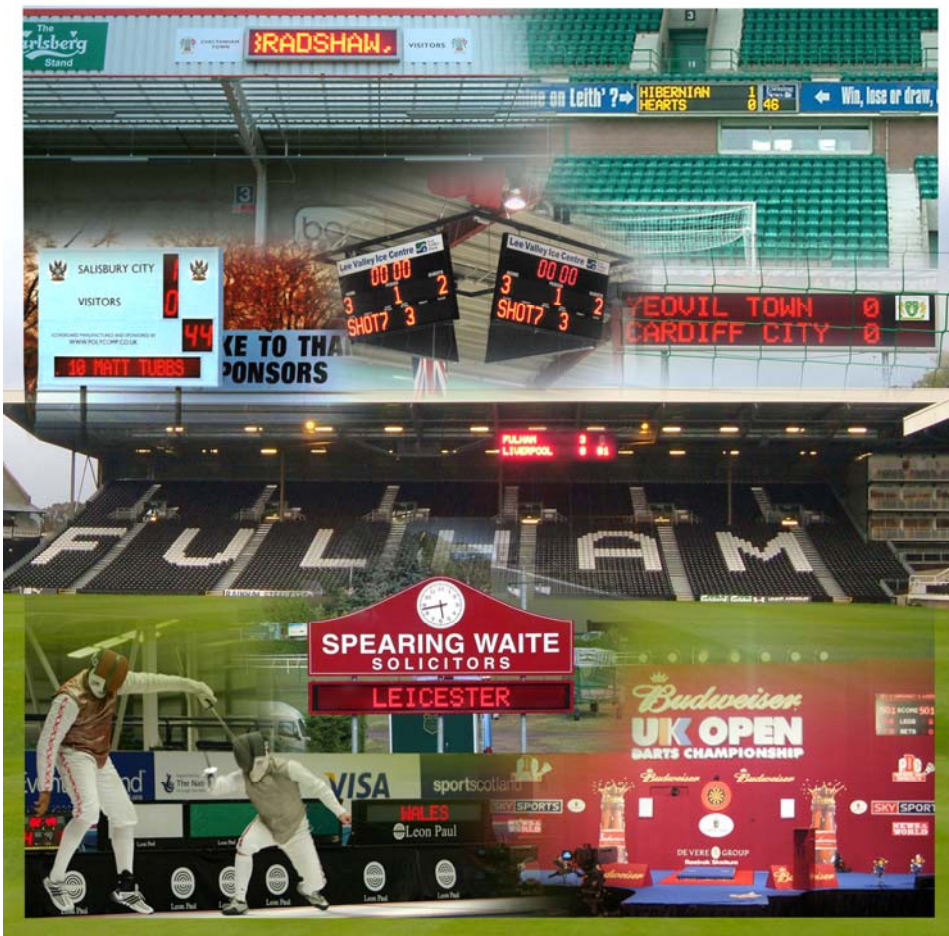


Scoreboards



- Football
- Rugby
- Cricket
- Hockey/Ice Hockey
Including other period play sports
- Horse Racing
Fixtures/Results

- Racket Sports
- Darts League
- Athletics *Listings*
- Motor Sport *Listings*
- Time Trial *Listings*
- Contact Sports,
Including; Boxing, Fencing
- Fringe & Specialist

www.LEDsynergy.co.uk

LEDsynergy Ltd

Knights Court, Magellan Close, Andover, Hampshire, SP10 5NT
Tel: 01264 303030 Fax: 01264 304030 sales@LEDsynergy.co.uk

DESIGN

MANUFACTURE

INSTALLATION

DEVELOPMENT

COMMISSIONING

Scoreboard Displays

From simple score tallies to more elaborate scoring systems showing player names, our range of scoreboards are flexible and provide a solution to meet the demands of most sports, from Bog Snorkelling to Football matches. Generally seen from near and far the character heights are large enough to be easily read up to a few hundred metres away allowing spectators to keep an eye on the score at every stage of the match.



Left: Results display showing event timings and placings (*Karting UK*)



Below: Suspended 4 Display Ice Hockey Scoring System. Inset diagrams (bottom of page) show the different scoring displays during the game—controlled by ringside laptop (*Lee Valley Ice Centre*)

Lee Valley Ice Centre

HOME	PERIOD	GUESTS			
40	5	20			
PLAYER	PENALTY	SHOTS ON GOAL	SHOTS ON GOAL	PENALTY	PLAYER
07	2:30	3	1	4:40	09
04	4:50			0:50	22

MS8/150/2L

300mm CLOC

MS240/150/2L

Lee Valley Ice Centre

HOME	PERIOD	GUESTS			
3	1	2			
SMITH, J.					
LEE VALLEY					
PLAYER	PENALTY	SHOTS ON GOAL	SHOTS ON GOAL	PENALTY	PLAYER
MARKS	5,5	4,5	4	5,5	5
SCORE	26	20	18	15	18

Lee Valley Ice Centre

HOME	PERIOD	GUESTS			
40	5	20			
PLAYER	PENALTY	SHOTS ON GOAL	SHOTS ON GOAL	PENALTY	PLAYER
07	2:30				
04	4:50	4	GOAL		

MS8/150/2L

LEDsynergy Ltd

Knights Court, Magellan Close, Andover, Hampshire, SP10 5NT
Tel: 01264 303030 Fax: 01264 304030 sales@LEDsynergy.co.uk

DESIGN

MANUFACTURE

INSTALLATION

DEVELOPMENT

COMMISSIONING

Scoreboard Displays



Left: MS16/250-2L
Suspended display with minute counter (Bournemouth FC)

Right: MS24/80-6L
Wall Mounted Display with clock
(Northern Ireland Bog Snorkelling Championships)



Left: MS32/60-8L
Frame mounted display scoreboard
(Honda Powerboat Racing)



Above: MS32/60-6L
Freestanding exterior scoreboard
(Racing UK)



Above: Exterior 2 Digit timer
(Grampian Car Club)

DESIGN

MANUFACTURE

INSTALLATION

DEVELOPMENT

COMMISSIONING

LEDsynergy Ltd

Knights Court, Magellan Close, Andover, Hampshire, SP10 5NT
Tel: 01264 303030 Fax: 01264 304030 sales@LEDsynergy.co.uk

Scoreboard Displays



Left: MS16/250-2L
Suspended display with minute counter (Rockit Ball)

Below: Simple double column counter



Left: MS8/300-2L
(Merthyr Rugby Club)

Right: MS12/300-1L
with Time display
(Bradford 5 Alive Football Centre)

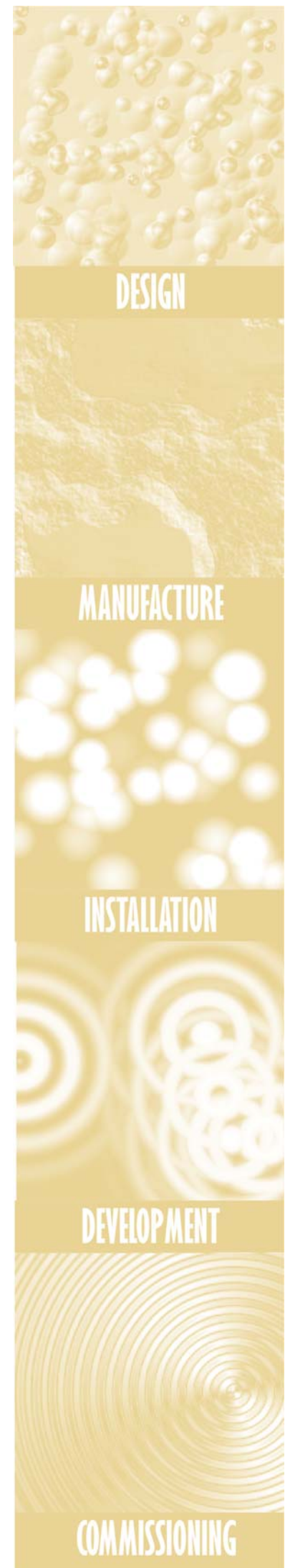


Below Left: MS16/300-2L
with minute counter (Hibernian FC)

Right: MS16/300-2L
(Basingstoke Rugby Club)



Below Right:
Single digit counter
with MS16/250-1L
message display & 2
digit minute counter
(Salisbury FC)



LEDsynergy Ltd

Knights Court, Magellan Close, Andover, Hampshire, SP10 5NT
Tel: 01264 303030 Fax: 01264 304030 sales@LEDsynergy.co.uk

Scoreboard Displays



Above: 16 character 2 line with 2 digit timer display (*Fulham FC*)

Left: single digit 2 line, 2 digit timer with 16 ch message display (*Eastleigh FC*)



Left: MS16/300-2L with minute counter (*Hibernian FC*)

DESIGN

MANUFACTURE

INSTALLATION

DEVELOPMENT

COMMISSIONING

LEDsynergy Ltd

Knights Court, Magellan Close, Andover, Hampshire, SP10 5NT
Tel: 01264 303030 Fax: 01264 304030 sales@LEDsynergy.co.uk

Scoreboard Displays



Top and inset right: MS16/60-5L scoreboard display (*Badminton*)

Above middle: single line 24 character 60mm with 2 column 2 line single digit and 2 column 4 character timers (*Wrestling*)

Above right: 400mm bi-line (*Badminton*)

Above: 16 character 100mm bi-line display and 2 timer displays either side of main display (*Fencing*)

DESIGN

MANUFACTURE

INSTALLATION

DEVELOPMENT

COMMISSIONING

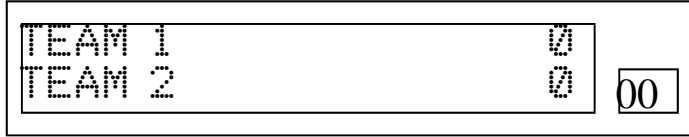
LEDsynergy Ltd

Knights Court, Magellan Close, Andover, Hampshire, SP10 5NT
Tel: 01264 303030 Fax: 01264 304030 sales@LEDsynergy.co.uk

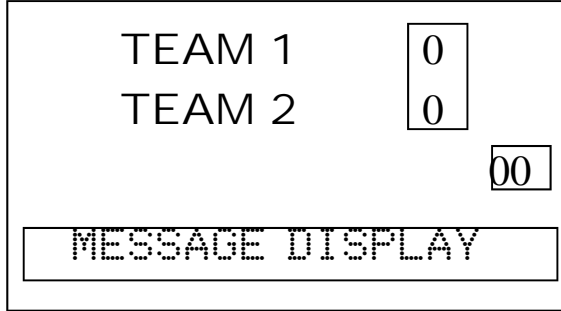
Scoreboard Displays

TYPICAL STYLES AND FORMATS

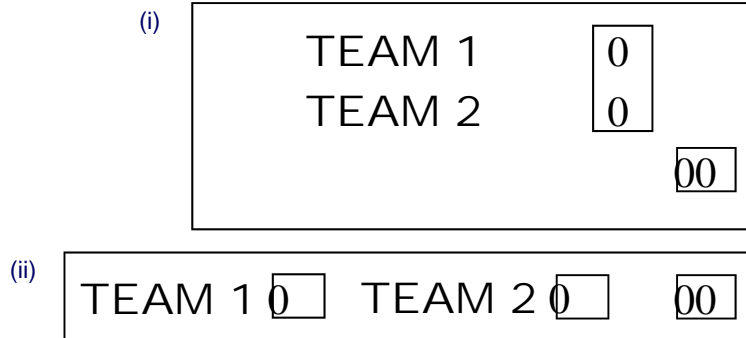
STYLE A
LED Characters with
1 digit scores and
2 digit timer



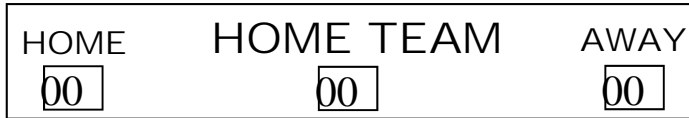
STYLE B
1 digit scores and
2 digit timer with 16
Character message
display



STYLE C (i or ii)
1 digit
scores
and
2 digit



STYLE D
2 digit scores and
2 digit timer only

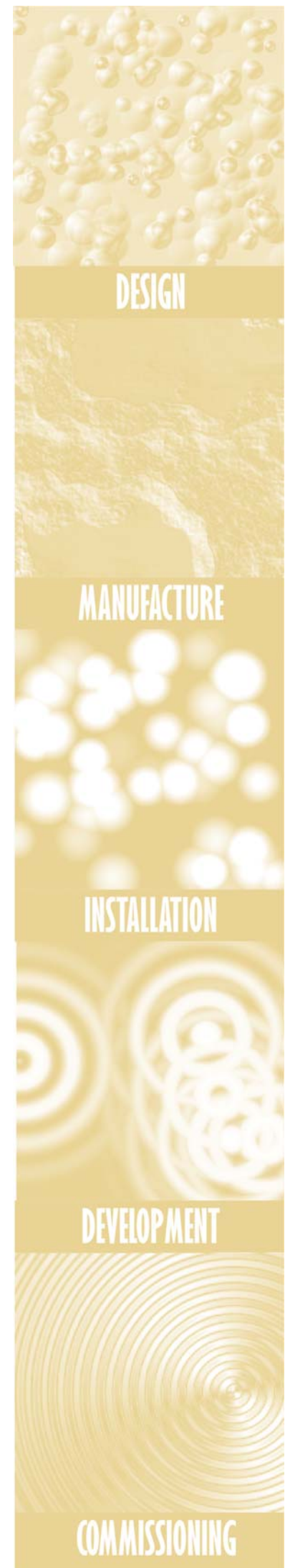


Scoreboards

Football, Rugby and Hockey scoreboards, ideally, can be mounted in one of two positions; on the half way line or behind the goal area.

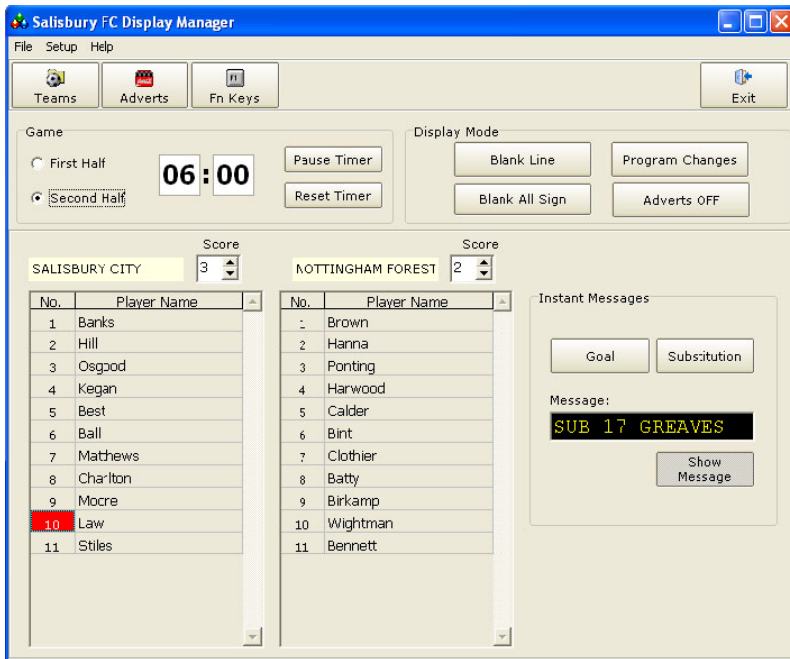
It is recommended that 400mm (16") character height is used behind the goal and 200mm (8") is used on the half way line. The display can then be read at any point around the grounds. (400mm—view distance <200metres, 200mm—view distance <100metres)

Other examples



LEDsynergy Ltd

Knights Court, Magellan Close, Andover, Hampshire, SP10 5NT
Tel: 01264 303030 Fax: 01264 304030 sales@LEDsynergy.co.uk



Left: Example of scoreboard software for Football match (Courtesy of Salisbury City FC).

OPERATION

LEDsynergy Scoreboards are easily programmable, with various methods of operation to suit almost any application.

Keyboard Operation

The simplest way to program a scoreboard, is using the standard **LEDsynergy** RMS-100 Infra-Red Keyboard. The keyboard is simply pointed at the display and the message is typed into the display.

PC Operation

LEDsynergy Scoreboard Displays can also be programmed from remote locations using PC's and Windows Compatible Software.

The displays can be connected to PC's in various ways:

- Connected directly to a PC's Serial Communication Port
- Via dial-up modem
- Over Ethernet TCP/IP network

Messages are edited/ composed on PC and then downloaded or sent to the display.

POPULAR COMMUNICATION OPTIONS *(Many others are available)*

- RS232** – Connected directly to the serial communication port of a PC. The cabling is limited to a maximum of 50 metres between the PC and the display. RS232 is suitable for single display applications with short cable lengths.
- RS485** – Connected to the serial communication port of a PC via a RS232 to RS485 converter. Suitable for use in connecting many signs together on the same cable with no conflicts, in electrically noisy environments.
- Ethernet** – Connected directly into a TCP/IP Ethernet network, and assigned its own IP address. Suitable for use where there is an existing network infrastructure.
- Modem** – Connected directly to a modem that answers an incoming call from the PC operator, and will disconnect after the message has been transmitted. Suitable for use where there is an existing telephone line and other communication options are unsuitable.
- Others** – Including Pagers, Newswire, Radio Modems, Keypad, Fibre Optics, please contact us for a more detailed information.

LEDsynergy Ltd

Knights Court, Magellan Close, Andover, Hampshire, SP10 5NT
Tel: 01264 303030 Fax: 01264 304030 sales@LEDsynergy.co.uk

DESIGN

MANUFACTURE

INSTALLATION

DEVELOPMENT

COMMISSIONING